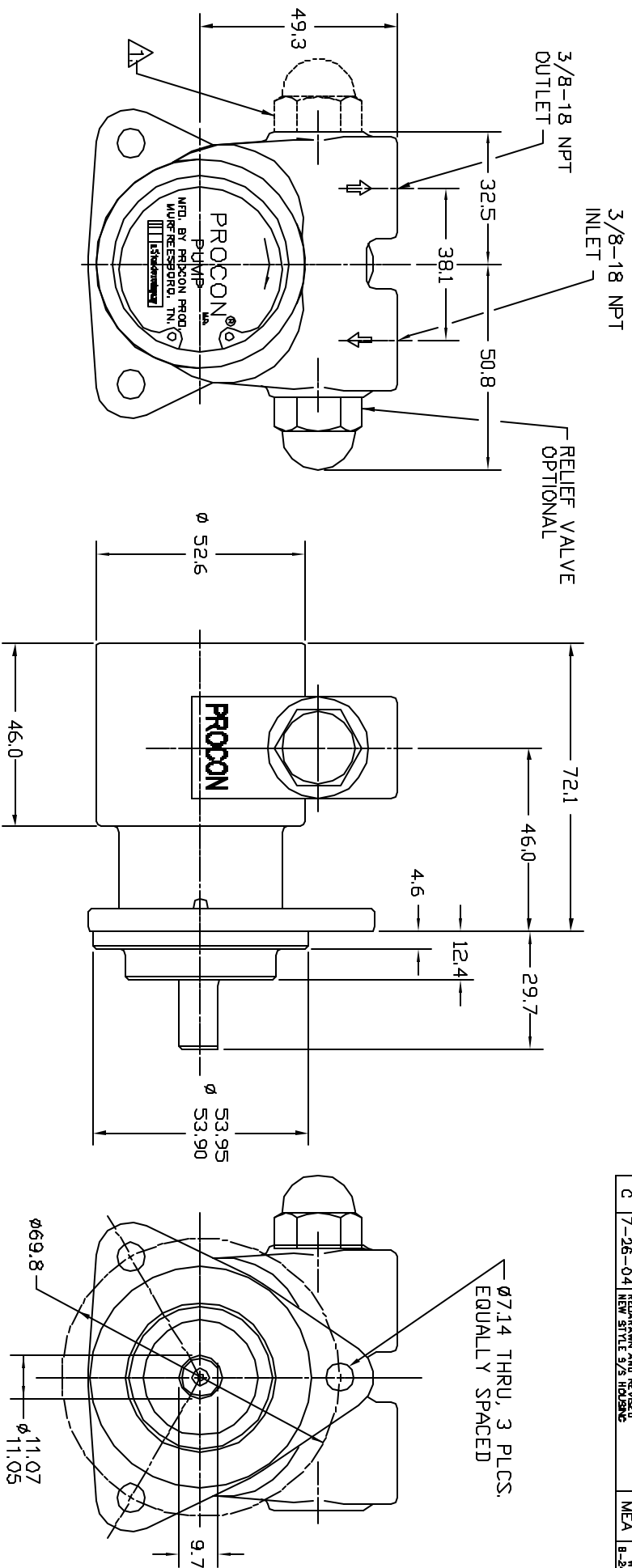


REV.	DATE	DESCRIPTION OF CHANGE	BY	APP'D
A	5-20-94	ADD PER. TABLE CHANGE TO 280 PPM	RCS	KCM 6-8-95
B	5-22-97	REVISED FOR NEW MODEL. NEW ANGLE OF VANES AND NEW STYLE 3/8" HOLES	KCM	RCS 6-11-97
C	7-26-04	NEW STYLE 3/8" HOLES	MEA	B-24-04



PUMP CAPACITY @ 1450 RPM	
FLOW RATE	PRESSURE RANGE
48 AND 80 LPH	0 TO 1380 KPa
111 TO 445 LPH	0 TO 1720 KPa

NOTES:

▲ FOR REVERSE ROTATION PUMP, THE RELIEF VALVE WOULD BE LOCATED ON THE OPPOSITE SIDE AND THE INLET PORT, OUTLET PORT, FLOW DIRECTION ARROWS, AND NAMEPLATE ARROW WOULD BE REVERSED.

MATERIAL		UNLESS OTHERWISE SPECIFIED: REMOVE BURRS AND SHARP EDGES. MACHINED SURFACE ROUGHNESS 3.2 MICROMETERS Ra. TOLERANCES: DIMENSIONS ARE REFERENCE	
THIRD ANGLE PROJECTION		<p>Procon Products</p> <p>A Division of Foshin Industries</p> <p>11000 Highway 5722</p> <p>Blountville, TN 37617</p>	
TITLE		OUTLINE, PUMP-SERIES "3" MOUNTING "E"	
SCALE	DRAWN	DATE	CHECKED
FULL	KGM	10-11-90	RCS
DO NOT SCALE DRAWING	DATE	10-24-90	DATE
	2065		
	1		1

ALL DIMENSIONS ARE IN MILLIMETERS